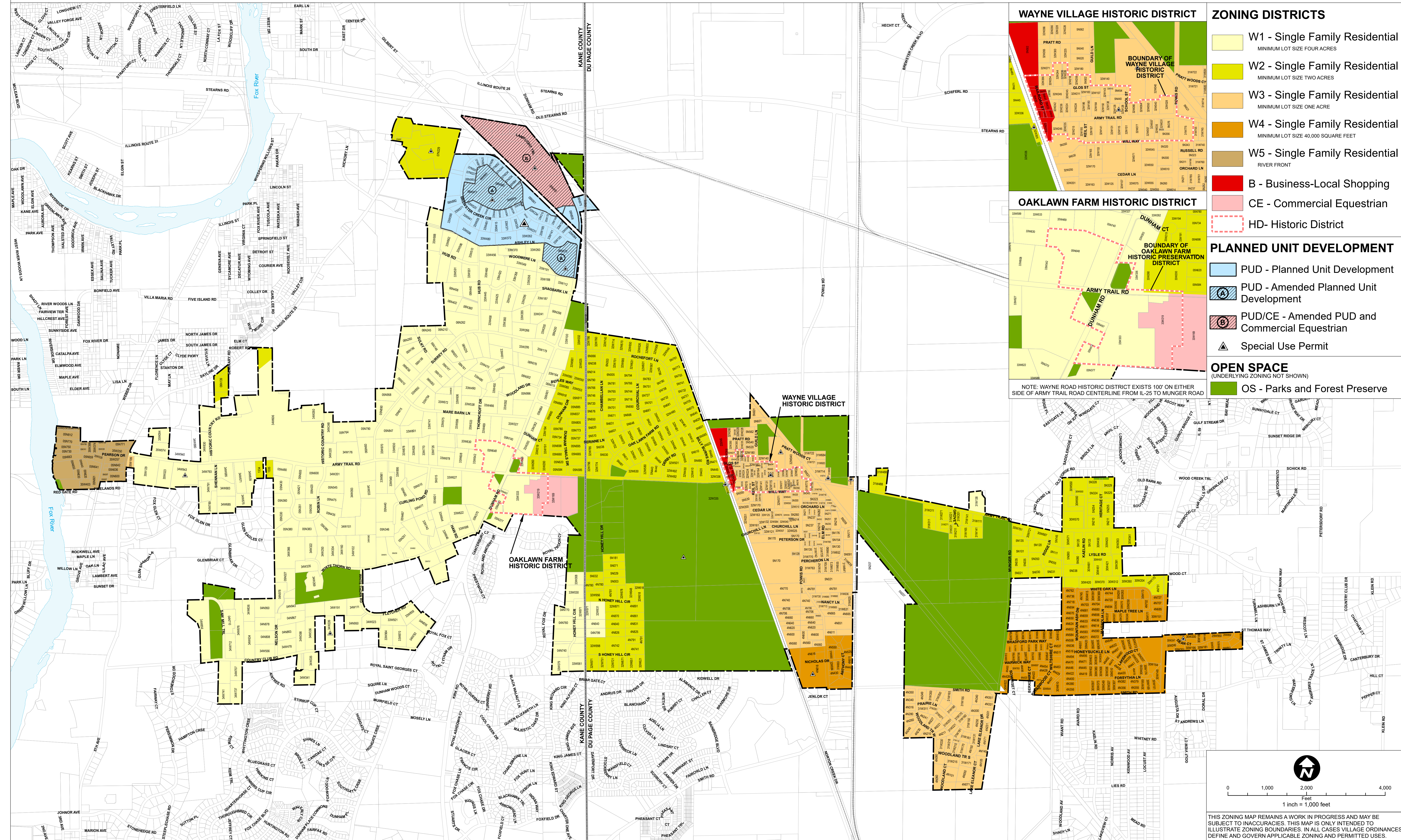




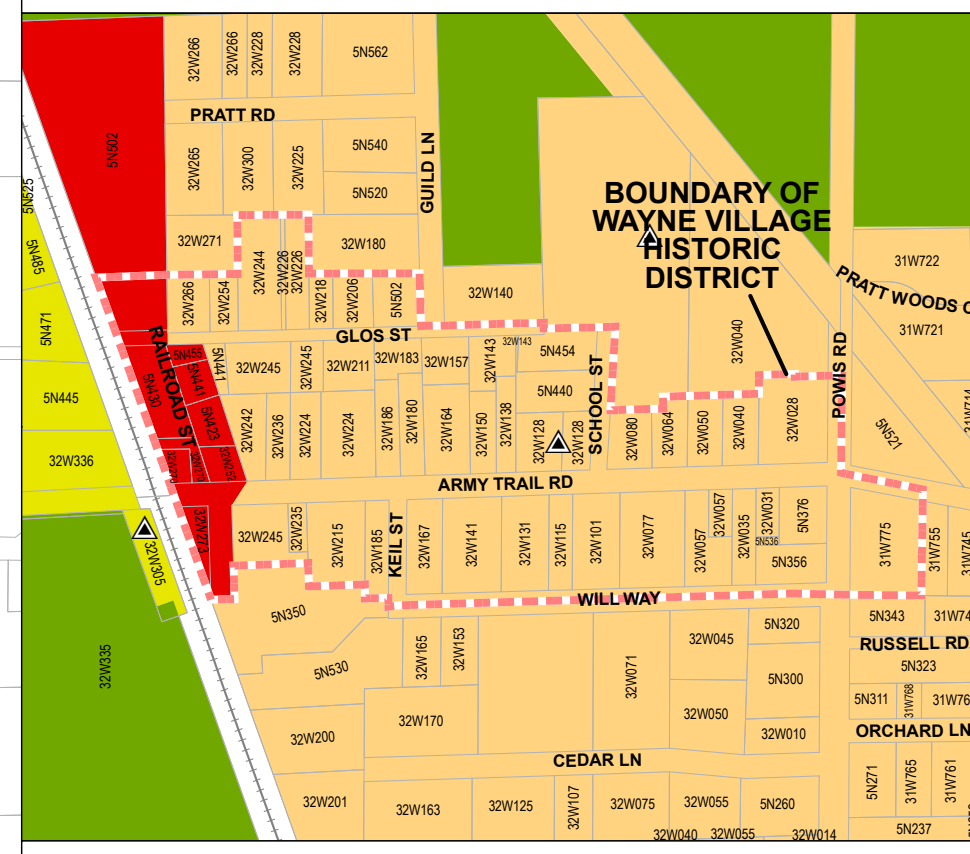
# VILLAGE OF WAYNE ILLINOIS

# ZONING DISTRICT MAP 2025

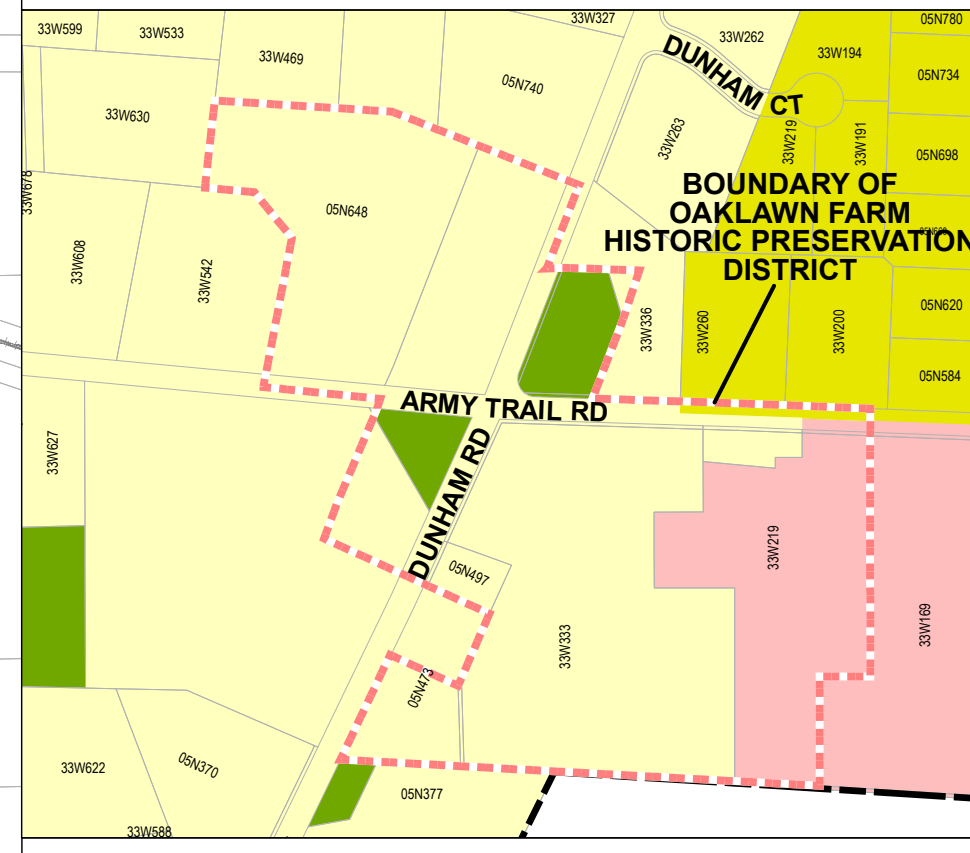
ADOPTED BY THE BOARD OF TRUSTEES MARCH 4TH, 2025 - ORDINANCE #ORD. 25-01.



### WAYNE VILLAGE HISTORIC DISTRICT



### OAKLAWN FARM HISTORIC DISTRICT



### ZONING DISTRICTS

- W1 - Single Family Residential  
MINIMUM LOT SIZE FOUR ACRES
- W2 - Single Family Residential  
MINIMUM LOT SIZE TWO ACRES
- W3 - Single Family Residential  
MINIMUM LOT SIZE ONE ACRE
- W4 - Single Family Residential  
MINIMUM LOT SIZE 40,000 SQUARE FEET
- W5 - Single Family Residential  
RIVER FRONT
- B - Business-Local Shopping
- CE - Commercial Equestrian
- HD- Historic District

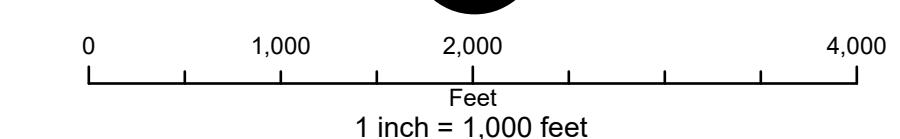
### PLANNED UNIT DEVELOPMENT

- PUD - Planned Unit Development
- PUD - Amended Planned Unit Development
- PUD/CE - Amended PUD and Commercial Equestrian
- Special Use Permit

### OPEN SPACE

- OS - Parks and Forest Preserve

NOTE: WAYNE ROAD HISTORIC DISTRICT EXISTS 100' ON EITHER SIDE OF ARMY TRAIL ROAD CENTERLINE FROM IL-25 TO MUNGER ROAD



THIS ZONING MAP REMAINS A WORK IN PROGRESS AND MAY BE SUBJECT TO INACCURACIES. THIS MAP IS ONLY INTENDED TO ILLUSTRATE ZONING BOUNDARIES. IN ALL CASES VILLAGE ORDINANCES DEFINE AND GOVERN APPLICABLE ZONING AND PERMITTED USES.